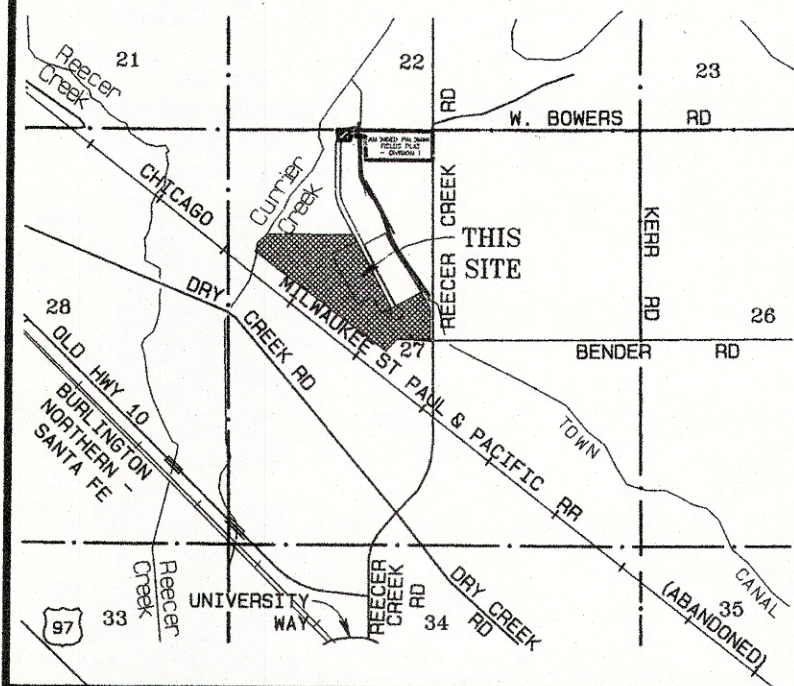


VICINITY MAP
(Not To Scale)



PALOMINO FIELDS PLAT - DIVISION V
A REPLAT OF TRACT C AND TRACT D, PALOMINO FIELDS PLAT - DIVISION II
A PORTION OF THE SE 1/4 OF THE NW 1/4 OF SECTION 27, TOWNSHIP 18 NORTH, RANGE 18 EAST, W.M.
KITKITAS COUNTY, WASHINGTON

Receiving No.
LPF-19-00004
LP-07-00031

181827

APPROVALS

KITKITAS COUNTY DEPARTMENT OF PUBLIC WORKS

I HEREBY CERTIFY that the Palomino Fields Plat - Division V, has been examined by me and I approve this plat.

Dated this Day of A.D., 2019.

.....
Kittitas County Engineer

HEALTH DEPARTMENT

I HEREBY CERTIFY that the Palomino Fields Plat - Division V, has been examined by me and I find that the sewage and water system herein shown does meet and comply with all requirements of the County Health Dept..

Dated this Day of A.D., 2019.

.....
Kittitas County Health Officer

CERTIFICATE OF PLANNING DEPT.

I HEREBY CERTIFY that the Palomino Fields Plat - Division V, has been examined by me and find that it conforms to the Comprehensive Plan of the Kittitas County Planning Commission.

Dated this Day of A.D., 2019.

.....
Kittitas County Planning Official

CERTIFICATE OF TREASURER

I HEREBY CERTIFY that the taxes and assessments are paid for the preceding years and for this year in which the plat is now to be filed. Parcel No. 960975 and 960976.

Dated this Day of A.D., 2019.

.....
Kittitas County Treasurer

CERTIFICATE OF ASSESSOR

I HEREBY CERTIFY that the Palomino Fields Plat - Division V, has been examined by me and I find the property to be in an acceptable condition for platting. Parcel No's. 960975 and 960976.

Dated this Day of A.D., 2019.

.....
Kittitas County Assessor

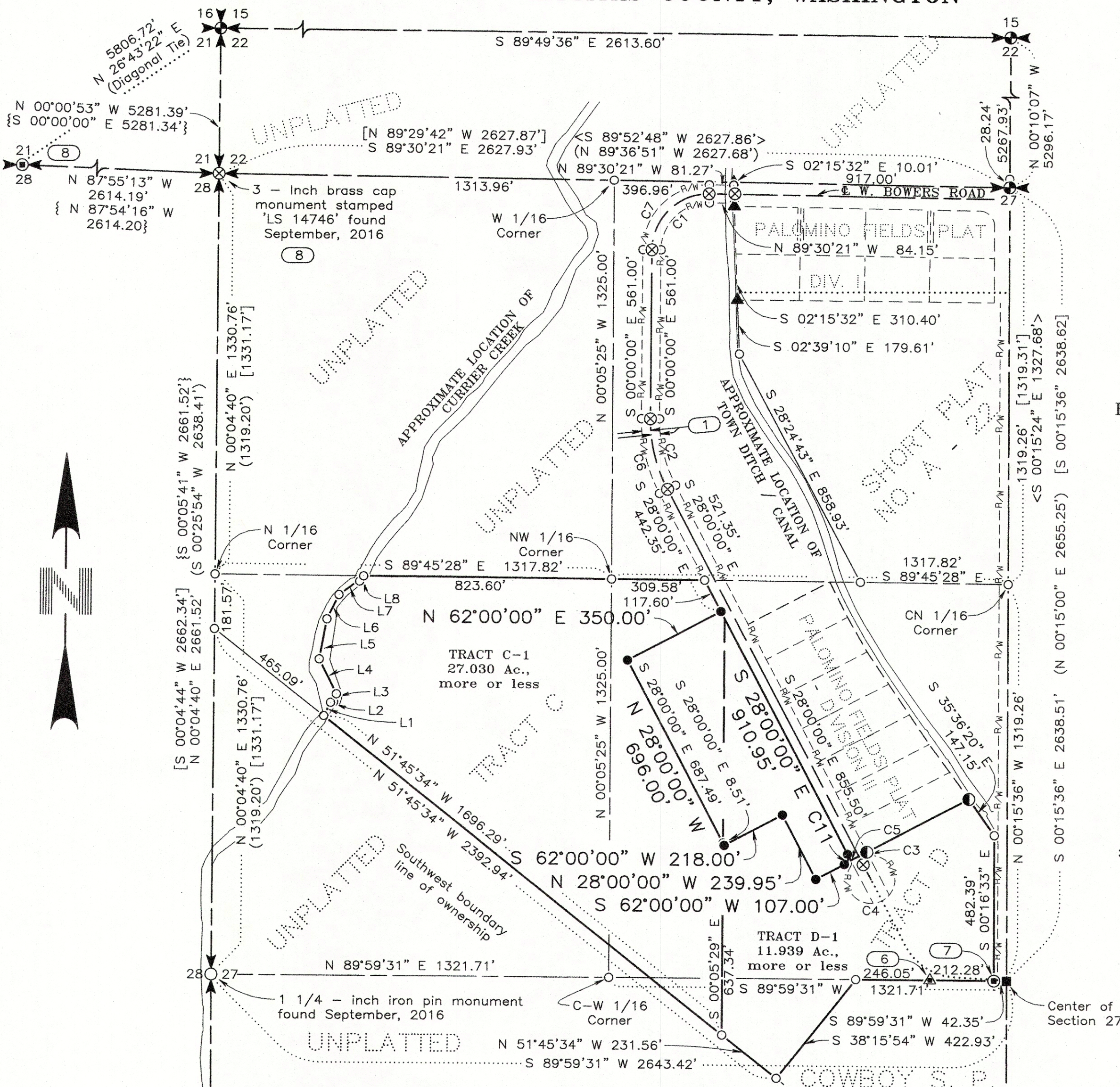
KITKITAS COUNTY BOARD OF COMMISSIONERS

EXAMINED AND APPROVED this day of A.D., 2019.

.....
BOARD OF COUNTY COMMISSIONERS

By
Chairperson

ATTEST:
.....
Clerk of the Board



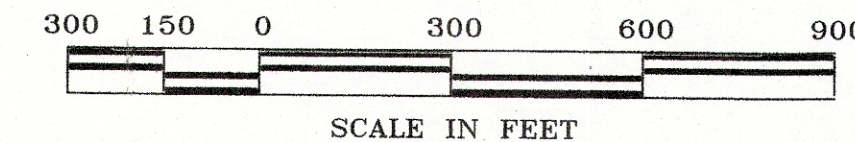
NOTICE
This is a Boundary Line Survey and as such is not intended to show, nor does it purport to show, all easements and encumbrances.
This survey was prepared for the exclusive use of the person, persons, or entity named in the Dedication Certificate hereon. Said certificate does not extend to any unnamed person without an expressed recertification by the Surveyor naming said person.

BASIS OF BEARINGS

The bearing for the east boundary line of the Northwest quarter of Section 27 equal Cruse & Nelson's bearing of South 00°15'36" East for the same line as shown on the FHA, U.S.D.A. property survey found under Kittitas County's Auditor File No. 199702200014

LINE TABLE

LINE	BEARING	DISTANCE
L1	N 26°30'07" E	49.87'
L2	N 78°12'25" E	10.33'
L3	N 19°20'55" E	28.07'
L4	N 26°40'51" W	130.02'
L5	N 10°21'53" E	136.08'
L6	N 26°13'14" E	90.11'
L7	N 53°25'36" E	89.88'
L8	N 44°26'10" E	13.34'



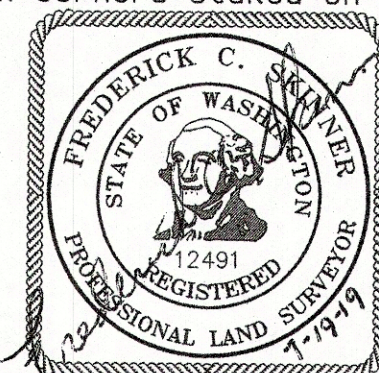
AUDITOR'S CERTIFICATE
Filed for record this day of 2019, at M, in Book of Surveys at Page(s) under Auditor's File Number at the request of Western Pacific Engineering & Survey, Inc.

.....
County Auditor

.....
Deputy County Auditor

SURVEYOR'S CERTIFICATE

I hereby certify that the Palomino Fields Plat - Division V plat is based on an actual survey and subdivision of Section 27, Township 18 North, Range 18 East, W.M.; that the distances and courses and angles are shown thereon correctly; that the monuments have been set; and lot and block corners staked on the ground.



Frederick C. Skinner
Frederick C. Skinner, P.E./ P.L.S.
Washington Land Surveyor No. 12491
WESTERN PACIFIC ENGINEERING AND SURVEY, INC.
Pioneer Way Professional Center
1328 Hunter Place
Moses Lake, Washington 98837

INSTRUMENT USED	INDEXING DATA
Trimble R10 GPS Receivers	
Traverse Closure Meets Standards Per WAC 332-130-090	

WESTERN PACIFIC ENGINEERING & SURVEY
A TERRA DEVELOPMENT SERVICES CORPORATION
1328 E. Hunter Place, Moses Lake, Washington
T:(509)765-1023 F:(509)765-1298
Services in Washington and Idaho

LCU, INC.

Surveyed by LMH	Scale 1" = 300'
Drawn by Tml/ FCS	Sheet 1 of 4
Checked by FCS	Project No. 18146

File --- Project Desc.: S:\18146\18146 DIV 5\18146 MP5.pro (Plotted - Jul 19, 2019)